

QUARTERLY ACTIVITIES REPORT

March 2022

27 April 2022

GME Resources Limited (“**GME**” or “**the Company**”) provides an update on its activities completed during the March 2022 quarter.

Highlights

- **PFS update commenced for NiWest Nickel-Cobalt Project**
- **Nickel price surges, currently trading above US\$15/lb**
- **Six gold and three nickel anomalies outlined by soil sampling at the Abednego Project**

NiWest (100%) Nickel Cobalt Project

During the reporting period the Company advised that work had commenced to update the Pre-Feasibility Study (**PFS**) for the 100%-owned NiWest Nickel-Cobalt Project in Western Australia (“**NiWest**” or “**the Project**”) (Refer APPENDIX 1 & 2).

The Company has now formally re-engaged the original PFS study team to complete an update of the PFS estimates to quantify the impact of the significantly higher nickel (+90% on PFS) and cobalt pricing environment on the PFS financial metrics. The updated PFS will also include an updated cost estimate and potential project scope enhancements which GME has been investigating since completion of the original PFS in 2018. The work program will be funded from the Company’s existing cash reserves.

NiWest hosts one of the highest-grade undeveloped nickel laterite resources in Australia estimated to contain 85 million tonnes averaging 1.03% Nickel and 0.065% Cobalt¹ (Refer Table 1 APPENDIX 2). Over 75% of the resource falls within the Measured and Indicated JORC categories and there is potential to expand the current resource base with further drilling.

Ore Reserves in the 2018 PFS were based on Mt Kilkenny, Hepi and Eucalyptus project areas. The remaining 4 project areas contain an additional 18 million tonnes of JORC 2012 resources at similar grades and provide further upside to improve long term production rates (Refer table 1 in Appendix 2). The 2018 PFS indicated average annual production over the first 15 years of

¹ Refer to ASX announcement dated 2 August 2018: *NiWest Pre-Feasibility Study Delivers Outstanding Results*

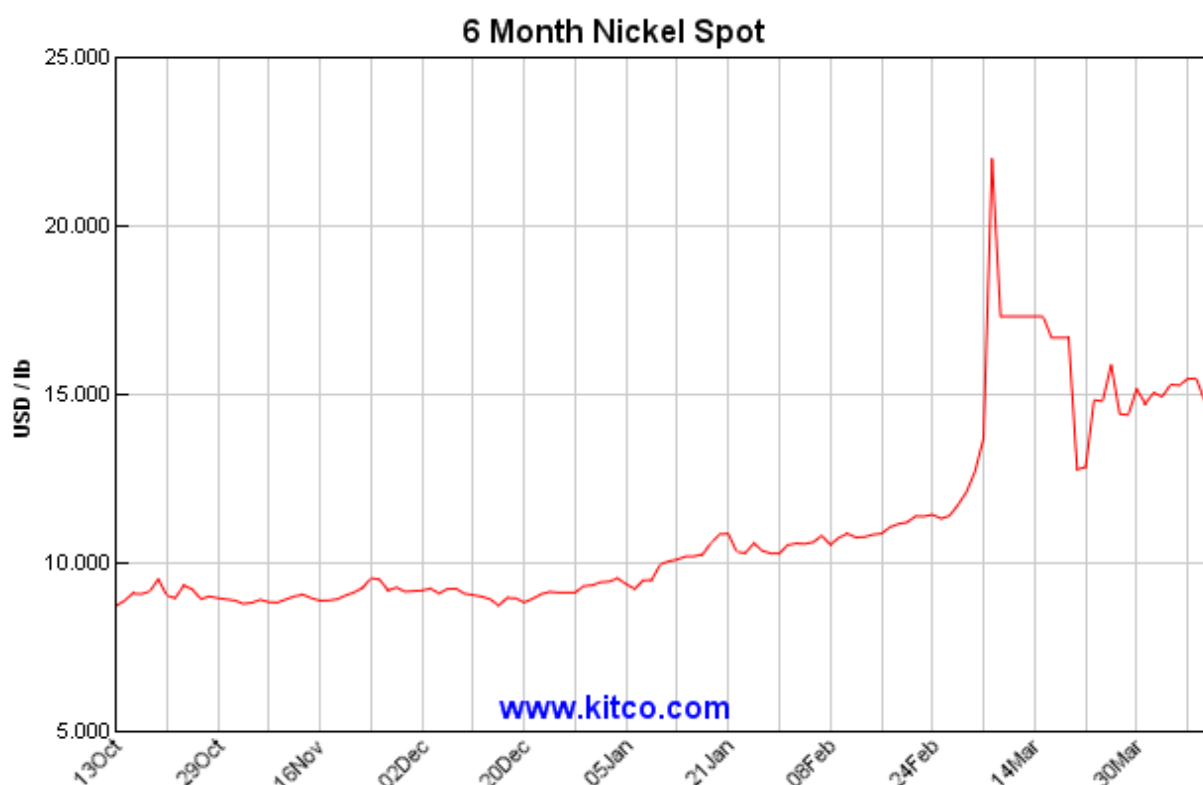
Project life was 19.2ktpa nickel and 1.4ktpa cobalt at an All-in Sustaining Cost of US\$3.48/lb of nickel¹.

Development studies for a heap leach / direct solvent extraction process producing battery grade nickel sulphate are well advanced. Work to date includes an extensive Pre-Feasibility Study completed in mid-2018, including a continuous pilot test program that demonstrated a technically viable metallurgical flowsheet.

The PFS outlined a 20 plus year technically robust project with significant leverage to nickel price growth. Challenges with financing a new nickel laterite operation in the then prevailing environment did not warrant significant further investment, however, recent strength in nickel and cobalt prices and increased inbound interest from battery metal consumers now justifies further advancement of the Project.

Nickel Price

Nickel price increased around 60% over the March quarter. Following a short-term spike caused by a large short selling order, nickel price has readjusted and is trading around US\$33,000 or US\$15/lb which is double the price used in the PFS financial assumptions.



Golden Cliffs NL 100% Gold Assets

Six gold and three nickel anomalies outlined by Ultra Fine Fraction soil sampling at the Abednego Project

- Six gold and three nickel targets identified along a seven-kilometre strike length of the highly prospective Federation shear zone
- Three new coherent nickel anomalies identified adjacent to gold targets

During the reporting period the Company released results of a detailed Ultra fine Fraction (“UFF”) soil sampling program within the highly prospective Federation Shear Zone, at the Company’s 100% owned Abednego Project, situated approximately 45km east of Leonora, in the Eastern Goldfields of Western Australia (Figure 3).

The UFF soil sampling program comprising 488 samples was completed at the Abednego Project during December 2022. The UFF soil samples were collected on a nominal 100 x 100m, 100 x 50m or 200 x 100m grid. The program was designed to target gold and nickel mineralisation below thin alluvial and sheetwash cover along the highly prospective Federation Shear Zone, extending to the north-northeast of the Homeward Bound, Federation and Federation North gold deposits (refer ASX announcements dated 14 December 2021 and 15 February 2022, and Figures 1-2).

Results from the program have successfully delineated six discrete gold anomalies and three nickel geochemical anomalies. The new exploration targets provide sufficient detail and technical information to enable target prioritisation and the design of follow-up sampling, geological mapping and aircore drilling programs.

Gold Targets

Six gold anomalies have been outlined by the UFF soil sampling program all located within a seven-kilometre zone along the highly prospective Federation shear zone, situated along strike from known mineralisation at the Federation and Federation North deposits (Figure 1). The soil anomalies overlie a number of parallel shears within the tenement area. The Federation North shear is located predominantly within a sequence of felsic, sedimentary and basalt units and the nearby Federation shear occurs at the contact between felsic rocks and a sequence of intercalated high-magnesium basalts, komatiite flows and dolerite. Several bullseye aeromagnetic anomalies are spatially associated with the Federation North, Breakaway, Manchester and Newcastle gold-in soil anomalies.

Nickel Targets

The three nickel-(copper-cobalt) anomalies identified by the recent program are associated with a sequence of intercalated high magnesium basalts and komatiite flows (Figure 2). The nickel anomalies are located on a seven-kilometre trend which has had no previous exploration for nickel. The two southern targets are associated with high magnesium basalts and komatiite flows located in the hanging wall to the Federation shear and are situated adjacent to the Federation and Link Zone gold targets (Figure 1 - 2). The northern nickel target is located just to the north of the Manchester and Newcastle gold anomalies and may represent a continuation of this sequence. The nickel targets will be evaluated in parallel with follow-up exploration on adjacent gold anomalies.

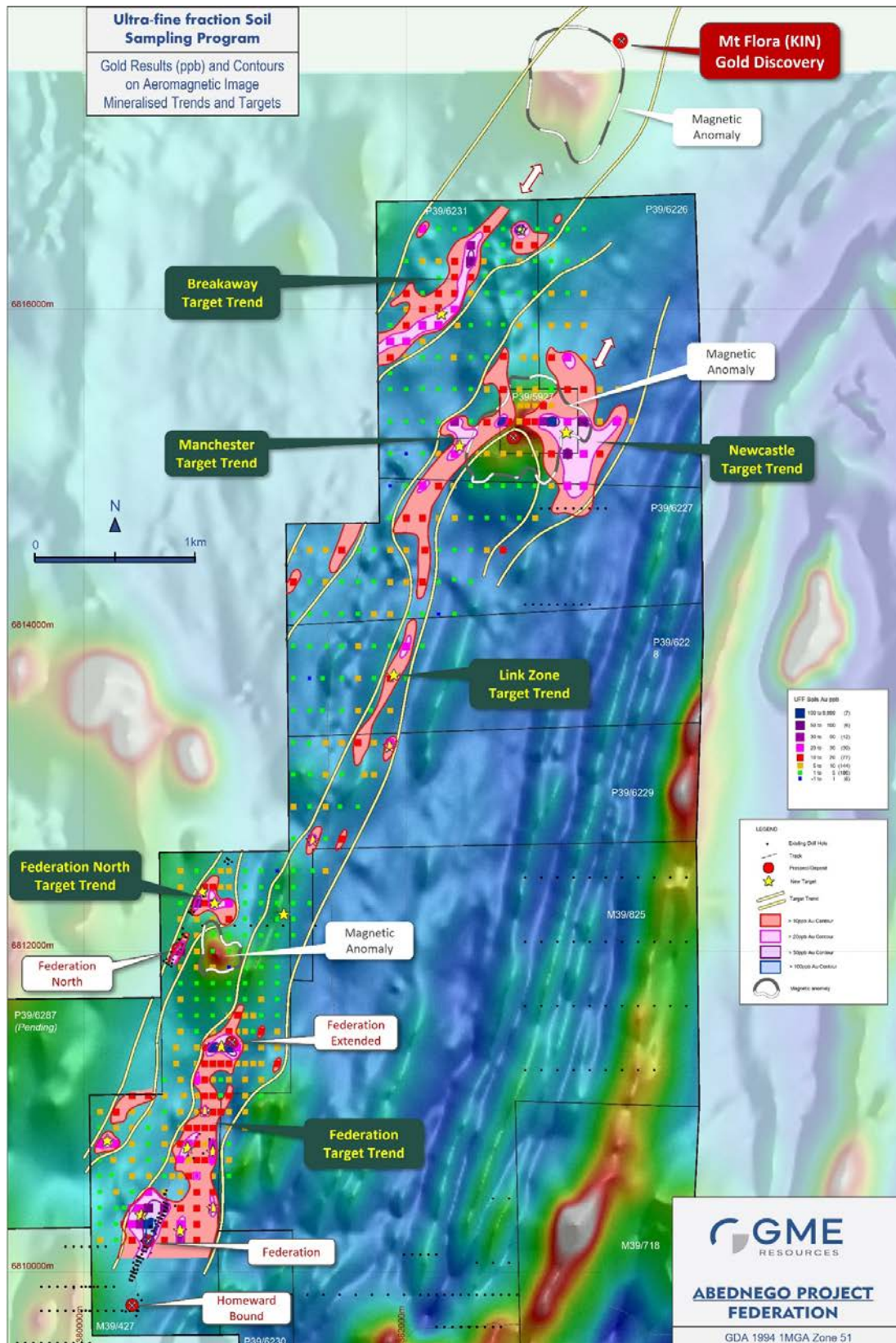


Figure 1: GOLD ANOMALIES Plan showing proposed UFF soil gold results and targets, plan underlain by aeromagnetic image. (refer ASX announcement 15 February 2022)

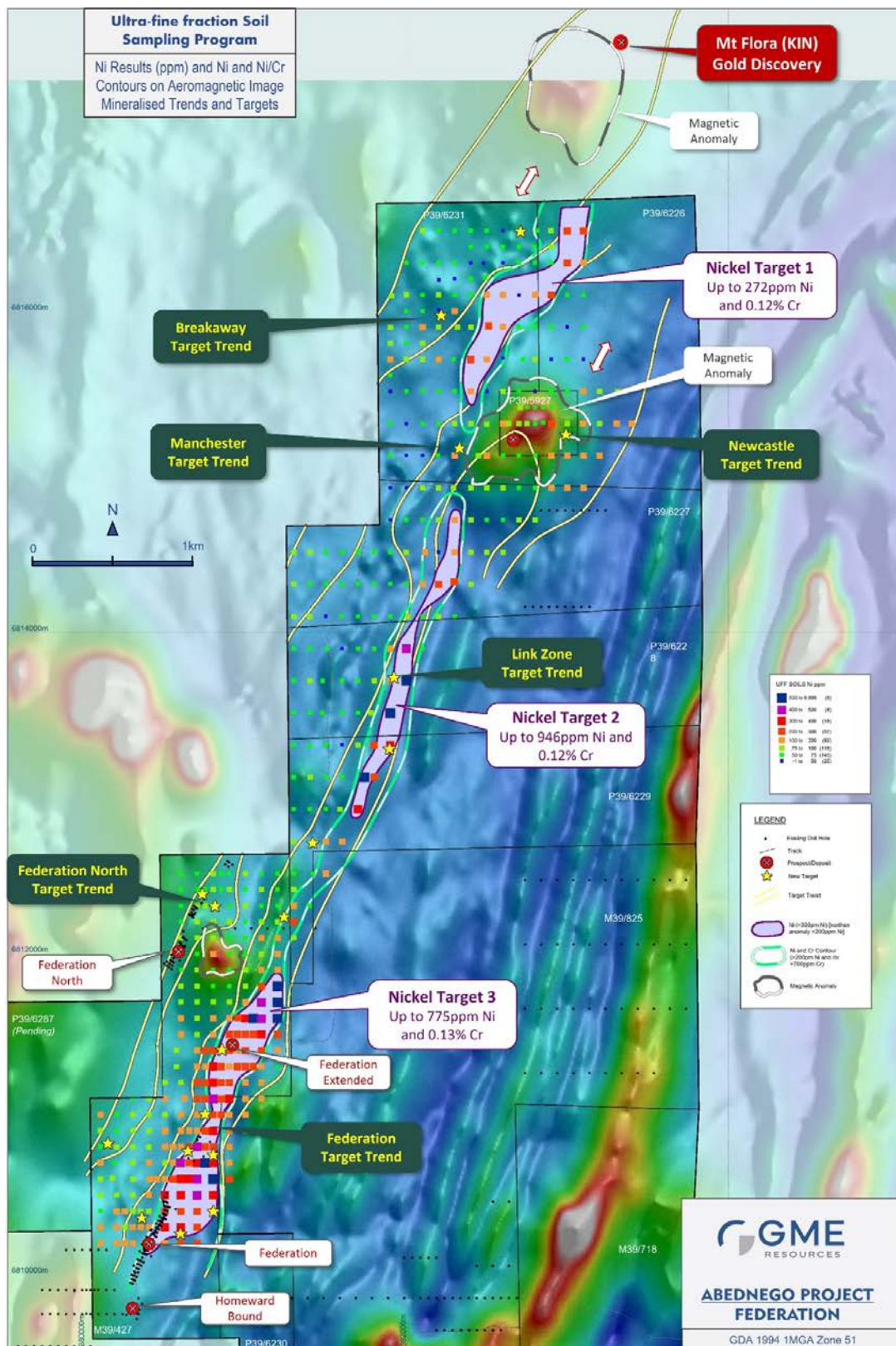


Figure 2: NICKEL ANOMALIES Plan showing proposed UFF soil Ni results and targets, plan underlain by aerial photograph. (refer ASX announcement 15 February 2022)

Next Step

The Company has plans to follow up prospective geochemical anomalies at the Abednego Project with additional infill and extensional UFF soil sampling, rock chip sampling and geological mapping. Future aircore drilling will then be designed to test high priority geochemical anomalies delineated by these programs.

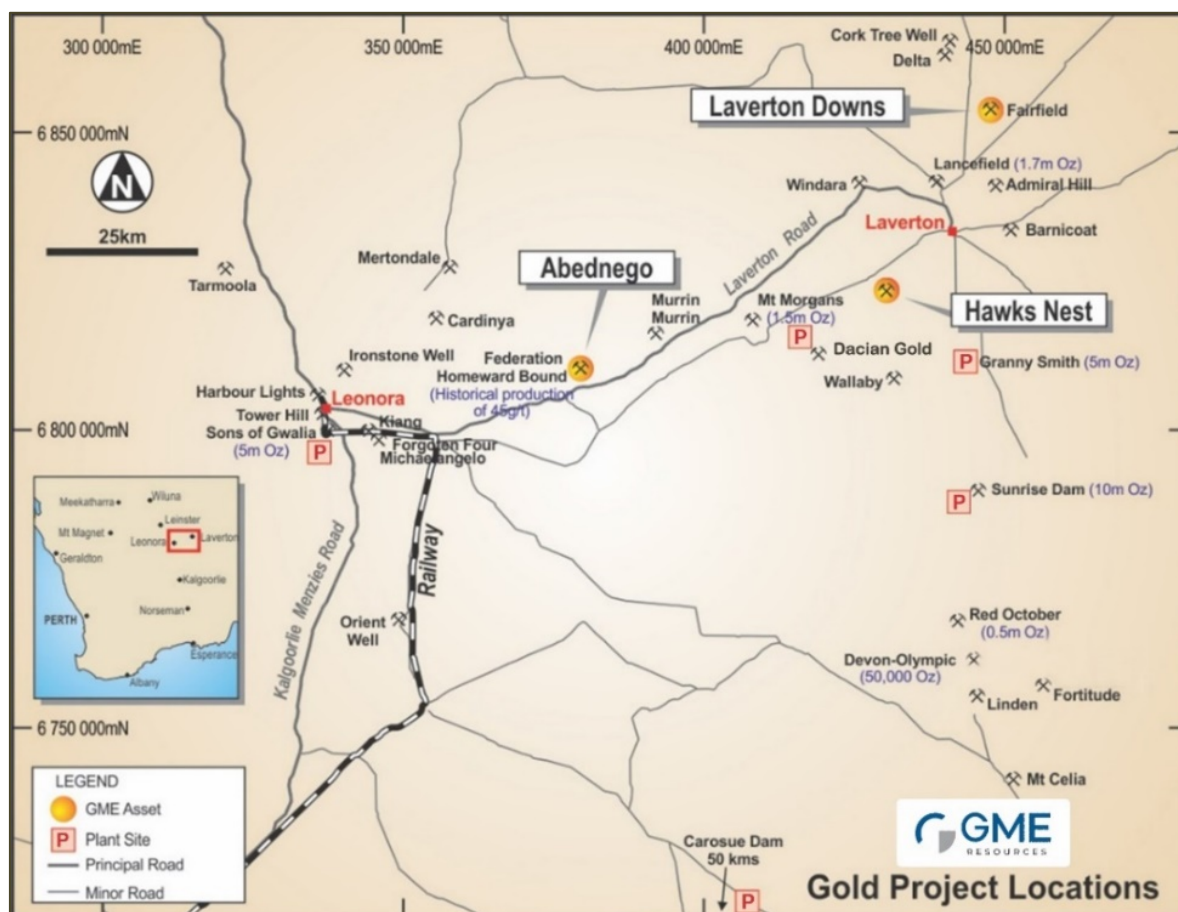


Figure 3 : Golden Cliffs NL - Gold Projects Location Plan

Expenditure this quarter

In accordance with the reporting requirements of ASX Listing Rule 5.3 the Company spent \$244,000 on exploration and evaluation activities during the quarter.

There was no mining development or production activities conducted during the quarter.

Expenditure predominantly related to:

- Abednego Gold Project and technical consulting services;
- General fieldwork including rehabilitation;
- Regulatory rents, rates and associated tenement administration holding costs.

In addition, during the current quarter the Company made payments to related parties of \$43,750 being Directors Remuneration.

COVID-19.

The Company continues to follow advice from Health Authorities and take the necessary steps to protect people engaged with the Company's activities. Other restrictions that remain in place are not having a material effect on the Company's activities.

This announcement has been authorised for issue by Mr James Sullivan, Managing Director, GME Resources Limited.

For further information please contact:		
Jamie Sullivan Managing Director Perth, Western Australia +61 8 9336 3388 jsullivan@gmeresources.com.au	Mark Pitts Company Secretary Perth, Western Australia +61 8 9316 9100 markp@endeavourcorp.com.au	
<p>About GME</p> <p><i>GME Resources Limited is an ASX listed (GME) exploration and development company with nickel, cobalt and gold interests in Western Australia. GME's principal asset is its 100% owned NiWest (nickel – cobalt) Project situated adjacent to Glencore's Murrin Murrin Operations. The Company has completed a Pre-Feasibility Study which has confirmed the technical and economic viability of a heap leach and direct solvent extraction operation at one of the largest undeveloped nickel/cobalt deposits in Australia.</i></p> <p>More information is available on GME's website at www.gmeresources.com.au</p>		

COMPETENT PERSONS STATEMENT

The information in this announcement that relates to exploration results is based on information reviewed by Mark Gunther and David Archer. Mr Gunther is a Principal Consultant of Eureka Geological Services and a Member of the Australian Institute of Geoscientists. Mr Archer is a Principal Consultant of Archer Geological Consulting. Mr Gunther and Mr Archer are Members of the Australian Institute of Geoscientists and have sufficient experience which is relevant to the style of mineralisation and type of deposit under consideration and the activity undertaking to qualify as a Competent Person as defined in the 2012 Edition of the "Australasian Code for Reporting of Exploration Results. Mr Gunther and Mr Archer consent to the inclusion in the report of the matters based on his information in the form and context in which it appears.

REPORTING OF PREVIOUS EXPLORATION RESULTS

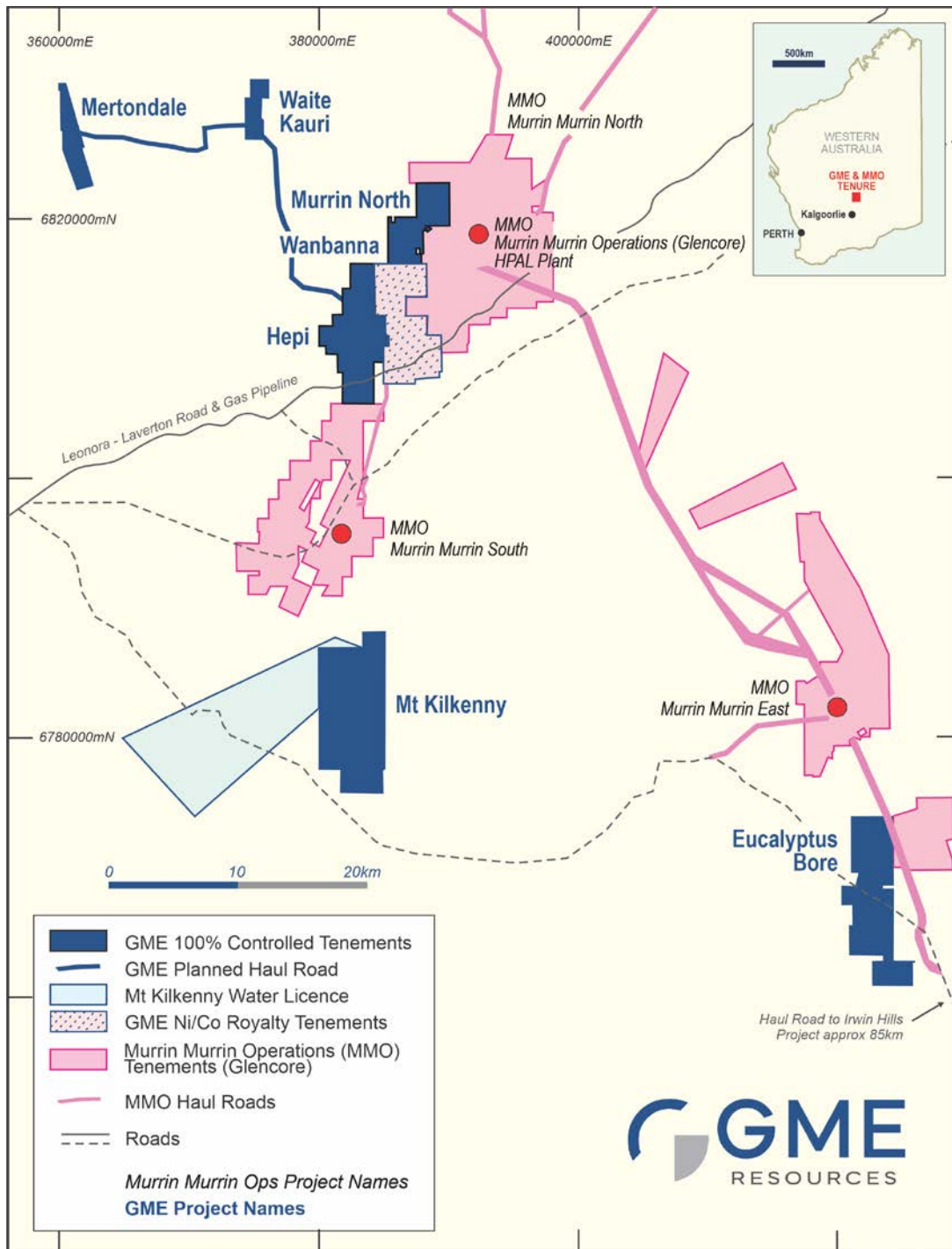
Where the Company references historical Exploration Results prepared and first disclosed prior to adoption of the JORC Code (2012) together with follow-up Exploration Results announced by it on 22 July 2014 and 24 July 2017, it refers to the ASX Announcement made on 3 February 2021 titled 'Abednego Gold Project Update' and to the JORC 2012 Table 1 disclosures made with that announcement.

The Company confirms that it is not aware of any new information or data that materially affects the information included in the relevant market announcements. Where the information relates to Exploration Results the Company confirms that the form and context in which the competent person's findings are presented have not been materially modified from the relevant original market announcements.

APPENDIX 1 NIWEST NICKEL-COBALT PROJECT

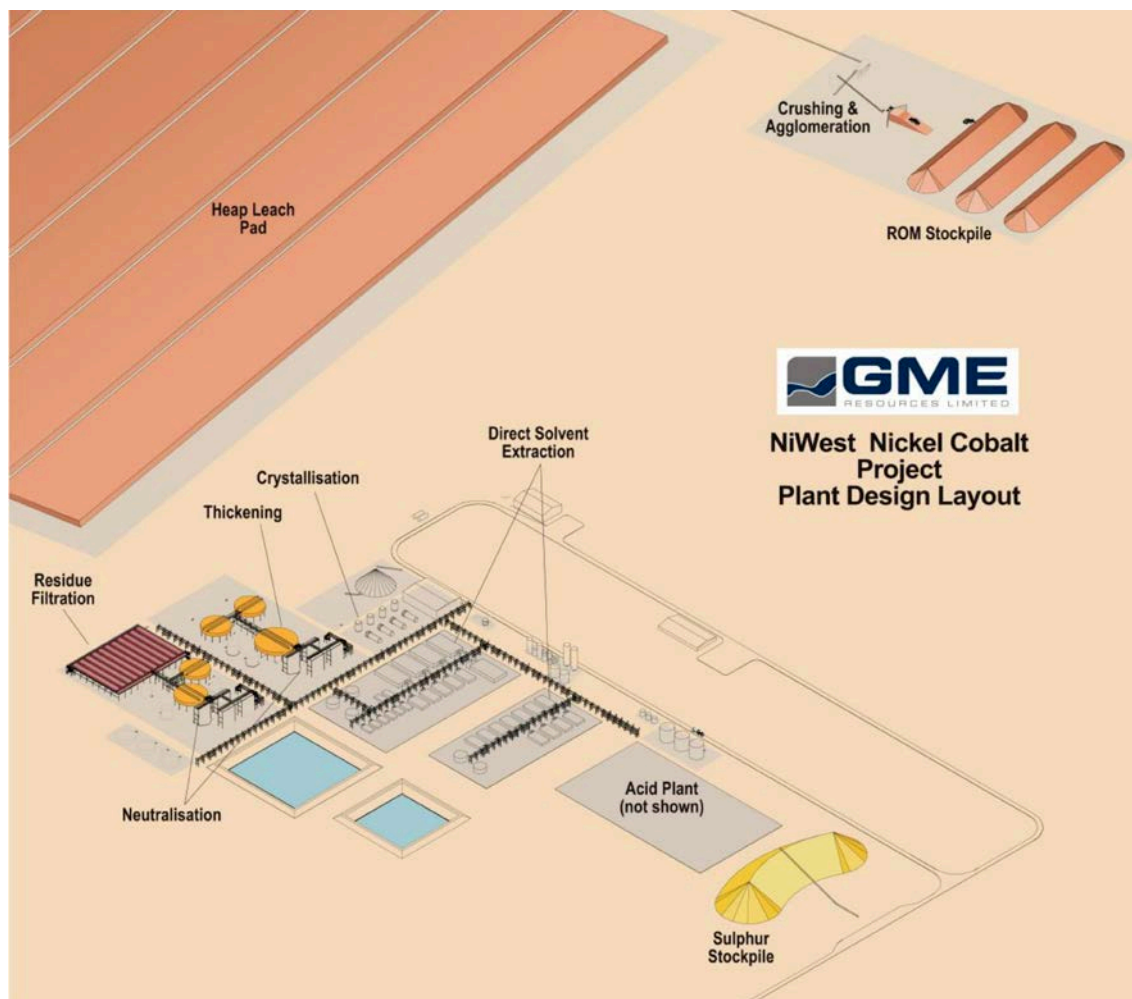
About NiWest

The NiWest Nickel-Cobalt Project is one of the highest quality, undeveloped nickel-cobalt deposits in Australia. The project is located adjacent to Glencore’s Murrin Murrin operations in the North Eastern Goldfields of Western Australia. The project is situated in a semi-arid region that is well serviced by existing infrastructure (refer Location Plan below).



NiWest Project location and infrastructure corridors

Pre-Feasibility Study Results



NiWest conceptual plant site layout.

GME released the results of the Pre-Feasibility Study (“PFS”) on its 100%-owned NiWest Nickel-Cobalt Project on 2 August 2018.

Overview

- Head grades average 1.05% nickel and 0.07% cobalt for the first 15 years. Opportunity to extend high-grade profile through potential conversion of Inferred Resources and/or inclusion of other known deposits.
- Initial 27-year operating life at a nameplate processing capacity of 2.4Mtpa. Projected steady-state nickel and cobalt recoveries of 79% and 85% respectively.
- Total production of 456kt nickel (in nickel sulphate) and 31.4kt cobalt (in cobalt sulphate). Average annual production of 19.2kt nickel and 1.4kt cobalt over the first 15 years.
- Ungearing post-tax NPV8% of A\$791M and internal rate of return (IRR) of 16.2% (equivalent pre-tax values of A\$1,390M and 21.2%, respectively). Payback period (pre-tax) of 4.4 years.
- Average cash unit operating cost (post royalties and cobalt credits) of US\$3.24/lb contained nickel (US\$3.00/lb for the first 15 years).
- Globally attractive pre-production capital intensity of sub-US\$20 per pound of average annual nickel production based on forecast pre-production capital expenditure of A\$966M.
- Projected free cashflow (post all capital expenditure and tax) of A\$3,342M.

COMPETENT PERSONS STATEMENT

NiWest Project – Mineral Resource and Ore Reserve Statement

Where the Company refers to the NiWest Nickel-Cobalt Project Prefeasibility Study 2018 and the Mineral Resource and Ore Reserve Statement (referencing the release made to the ASX on 2 August 2018), it confirms that it is not aware of any new information or data that materially affects the information included in that announcement and all material assumptions and technical parameters continue to apply and have not materially changed.

Forward Looking Statement

This announcement contains statements related to our future business and financial performance and future events or developments involving GME Resources (GME) that may constitute forward-looking statements. These statements may be identified by words such as “potential”, “exploitable”, “proposed open pit”, “evaluation”, “expect,” “future,” “further,” “operation, “development, “plan,” “permitting”, “approvals”, “processing agreement” or words of similar meaning. Such statements are based on the current expectations and certain assumptions of GME management & consultants, and are, therefore, subject to certain risks and uncertainties. A variety of factors, many of which are beyond GME’s control, affect our operations, performance, business strategy and results and could cause the actual results, performance or achievements of GME to be materially different from any future results, performance or achievements that may be expressed or implied by such forward-looking statements.

APPENDIX 2: NiWest Mineral Resources and Reserves Statement

The Company's Mineral Resource Statement (Table 1 and Table 2) has been compiled in accordance with the Australian Code for Reporting of Exploration Results, Mineral Resources and Ore Reserves (The JORC Code 2012 Edition) and Chapter 5 of the ASX Listing Rules and ASX Guidance Note 31.

Table 1: Mineral Resource Estimate^{1,2} for NiWest Project at 0.8% Ni Cut-off Grade

Deposit	JORC Classification	Tonnes (million)	Nickel Grade (%)	Cobalt Grade (%)	Nickel Metal (kt)	Cobalt Metal (kt)
Mt Kilkenny ¹	Measured	8.8	1.11	0.063	98	5.6
	Indicated	12.7	1.09	0.079	138	10.0
	Inferred	4.5	0.98	0.051	44	2.3
	Total*	26.0	1.08	0.069	279	17.9
Eucalyptus ¹	Indicated	23.7	1.04	0.064	247	15.3
	Inferred	12.8	0.95	0.056	121	7.1
	Total*	36.5	1.01	0.061	368	22.4
Hepi ¹	Measured	1.6	1.20	0.078	19	1.2
	Indicated	1.5	1.01	0.073	15	1.1
	Inferred	1.4	0.95	0.074	14	1.1
	Total*	4.5	1.06	0.075	48	3.4
Mertondale ²	Indicated	1.9	0.98	0.070	18	1.3
	Total*	1.9	0.98	0.070	18	1.3
Waite Kauri ²	Measured	1.5	1.01	0.062	15	0.9
	Indicated	0.3	0.91	0.025	3	0.1
	Inferred	0.0	0.09	0.015	0	0.0
	Total*	1.8	0.98	0.054	18	1.0
Murrin North ²	Measured	3.4	0.98	0.062	33	2.1
	Indicated	0.1	0.88	0.051	1	0.1
	Inferred	0.1	0.86	0.083	1	0.1
	Total*	3.7	0.97	0.062	35	2.3
Wanbanna ²	Indicated	10.1	1.03	0.066	104	6.7
	Inferred	0.7	0.99	0.070	7	0.5
	Total*	10.8	1.03	0.066	111	7.2
NiWest Project	Measured	15.2	1.08	0.064	165	9.8
	Indicated	50.4	1.04	0.068	527	34.5
	Inferred	19.5	0.95	0.057	186	11.0
	TOTAL*	85.2	1.03	0.065	878	55.4

* Columns may not total exactly due to rounding errors. Tonnages are reported as dry tonnage

1 ASX Release 2 August 2018

2 ASX Release 21 February 2017

Table 2: Mineral Resource Estimate^{1,2} for NiWest Project at 1.0% Ni Cut-off Grade

Deposit	JORC Classification	Tonnes (million)	Nickel Grade (%)	Cobalt Grade (%)	Nickel Metal (kt)	Cobalt Metal (kt)
Mt Kilkenny¹	Measured	5.7	1.22	0.072	70	4.1
	Indicated	7.8	1.20	0.094	93	7.3
	Inferred	1.7	1.11	0.060	19	1.1
	Total*	15.2	1.20	0.082	182	12.4
Eucalyptus¹	Indicated	12.5	1.16	0.074	145	9.2
	Inferred	3.1	1.08	0.062	34	1.9
	Total*	15.6	1.15	0.072	178	11.2
Hepi¹	Measured	1.1	1.34	0.088	14	0.9
	Indicated	0.7	1.12	0.086	8	0.6
	Inferred	0.4	1.07	0.104	5	0.5
	Total*	2.2	1.21	0.090	27	2.0
Mertondale²	Indicated	0.7	1.14	0.070	8	0.5
	Total*	0.7	1.14	0.070	8	0.5
Waite Kauri²	Measured	0.5	1.25	0.087	6	0.5
	Indicated	0.1	1.08	0.015	1	0.0
	Inferred	0.0	1.07	0.000	0	0.0
	Total*	0.6	1.23	0.079	7	0.5
Murrin North²	Measured	1.2	1.14	0.070	14	0.9
	Indicated	0.0	1.04	0.070	0	0.0
	Inferred	0.0	0.00	0.000	0	0.0
	Total*	1.3	1.14	0.070	14	0.9
Wanbanna²	Indicated	4.7	1.19	0.080	56	3.8
	Inferred	0.3	1.16	0.080	3	0.2
	Total*	5.0	1.19	0.080	59	4.0
NiWest Project	Measured	8.5	1.22	0.074	104	6.4
	Indicated	26.5	1.18	0.081	311	21.4
	Inferred	5.6	1.09	0.066	61	3.7
	TOTAL*	40.6	1.17	0.077	476	31.4

* Columns may not total exactly due to rounding errors. Tonnages are reported as dry tonnage

1 ASX Release 2 August 2018

2 ASX Release 21 February 2017

NiWest Ore Reserve Statement

The Company's Ore Reserve Statement (Table 3) has been compiled in accordance with the Australian Code for Reporting of Exploration Results, Mineral Resources and Ore Reserves (The JORC Code 2012 Edition) and Chapter 5 of the ASX Listing Rules and ASX Guidance Note 31.

Table 3: NiWest Ore Reserve Estimate¹ at 0.5% Ni cut-off

Orebody	JORC Classification	Tonnes (million)	Nickel Grade (%)	Cobalt Grade (%)
Mt Kilkenny	Probable	27.9	0.96	0.06
Eucalyptus	Probable	32.2	0.87	0.05
Hepi	Probable	4.7	0.91	0.06
Total*	Probable	64.9	0.91	0.06

* Columns may not total exactly due to rounding errors. Tonnages are reported as dry tonnage

¹ ASX Release 2 August 2018

APPENDIX 3: Tenement Summary

Table 4: Tenement Summary as at 31 March 2022

Project	Tenements	Interest Beginning Period	Interest End Period
Abednego West	M39/427, M39/0825 PL's 39/6225- 6231 P39/5927 Applications E39/2326 P37/9632-36 P39/6306 - 09	Golden Cliffs 100% Golden Cliffs 0% NiWest 100% Golden Cliffs NL	Golden Cliffs 100% Golden Cliffs 100% NiWest 100% Golden Cliffs NL 0%
Eucalyptus	M39/744 M39/289, M39/430, M39/344 M39/666, M39/674 M39/313, M39/568 M39/802 - 803 P39/5459 PL39/5962 Application GPA 39/016	NiWest Ni Co Rights 100% NiWest 100% NiWest 100% NiWest 100% NiWest 100% NiWest 100% NiWest 100% NiWest	NiWest Ni Co Rights 100% NiWest 100% NiWest 100% NiWest 100% NiWest 100% NiWest 100% NiWest 100% NiWest 0%
Hawks Nest	M38/218	Golden Cliffs 100%	Golden Cliffs 100%
Hepi	M39/717 - 718, M39/819, P39/6032	NiWest 100% NiWest 100%	NiWest 100% 0%
Laverton Downs	M38/1266 L38/340	Golden Cliffs 100% Golden Cliffs 100%	Golden Cliffs 100% Golden Cliffs 100%
Mertondale	M37/591	NiWest 100%	NiWest 100%
Mt Kilkenny	M39/878 – 879, E39/1784 E39/1794, EL39/2072	NiWest 100% NiWest 100% NiWest 100%	NiWest 100% NiWest 100% NiWest 100%
Murrin Murrin	M39/426, M39/456, M39/552, M39/553, M39/569	GlenMurrin 100% Nickel & Cobalt Golden Cliffs 100% gold and other minerals	GlenMurrin 100% Nickel & Cobalt Golden Cliffs 100% gold and other minerals
Murrin North	M39/758	NiWest 100%	NiWest 100%
Waite Kauri	M37/1216 M 37/1334	NiWest 100% NiWest 100%	NiWest 100% NiWest 100%
Wanbanna	M39/460	NiWest 80% Wanbanna Pty Ltd 20%	NiWest 80% Wanbanna Pty Ltd 20%
Misc. Licences	L37/175, L39/293 L37/247, L39/177, L37/205	NiWest 100% NiWest 100%	NiWest 100% NiWest 100%

LEGEND

E: Exploration Licence | **P:** Prospecting Licence | **PLA:** Prospecting Licence Application | **M:** Mining Lease | **ELA:** Exploration Licence Application | **L:** Miscellaneous Lease | **MLA:** Mining Lease Application

All of the above tenements and miscellaneous licences are in the Eastern Goldfields of Western Australia.

Appendix 5B

Mining exploration entity or oil and gas exploration entity quarterly cash flow report

Name of entity

GME RESOURCES LIMITED

ABN 62 009 260 315

Quarter ended ("current quarter")

31 MARCH 2022

Consolidated statement of cash flows		Current quarter \$A'000	Year to date (9 months) \$A'000
1.	Cash flows from operating activities		
1.1	Receipts from customers	-	-
1.2	Payments for		
	(a) exploration & evaluation	-	-
	(b) development	-	-
	(c) production	-	-
	(d) staff costs	-	-
	(e) administration and corporate costs	(59)	(332)
1.3	Dividends received (see note 3)	-	-
1.4	Interest received	-	-
1.5	Interest and other costs of finance paid	-	-
1.6	Income taxes paid	-	-
1.7	Government grants and tax incentives	-	-
1.8	Other – Royalty Income	-	100
1.9	Net cash from / (used in) operating activities	(59)	(232)
2.	Cash flows from investing activities		
2.1	Payments to acquire or for:		
	(a) entities	-	-
	(b) tenements	-	-
	(c) property, plant and equipment	-	65
	(d) exploration & evaluation	(244)	(692)
	(e) investments	-	-
	(f) other non-current assets	-	3

Consolidated statement of cash flows		Current quarter \$A'000	Year to date (9 months) \$A'000
2.2	Proceeds from the disposal of:		
	(a) entities	-	-
	(b) tenements	-	-
	(c) property, plant and equipment	-	-
	(d) investments	-	-
	(e) other non-current assets	-	-
2.3	Cash flows from loans to other entities	-	-
2.4	Dividends received (see note 3)	-	-
2.5	Other (provide details if material)	-	-
2.6	Net cash from / (used in) investing activities	(244)	(624)

3.	Cash flows from financing activities		
3.1	Proceeds from issues of equity securities (excluding convertible debt securities)	-	1,671
3.2	Proceeds from issue of convertible debt securities	-	-
3.3	Proceeds from exercise of options	-	-
3.4	Transaction costs related to issues of equity securities or convertible debt securities	-	(35)
3.5	Proceeds from borrowings	-	-
3.6	Repayment of borrowings	-	-
3.7	Transaction costs related to loans and borrowings	-	-
3.8	Dividends paid	-	-
3.9	Other (provide details if material)	-	-
3.10	Net cash from / (used in) financing activities	-	1,636

4.	Net increase / (decrease) in cash and cash equivalents for the period		
4.1	Cash and cash equivalents at beginning of period	1,296	213
4.2	Net cash from / (used in) operating activities (item 1.9 above)	(59)	(232)
4.3	Net cash from / (used in) investing activities (item 2.6 above)	(244)	(624)

Mining exploration entity or oil and gas exploration entity quarterly cash flow report

Consolidated statement of cash flows		Current quarter \$A'000	Year to date (9 months) \$A'000
4.4	Net cash from / (used in) financing activities (item 3.10 above)	-	1,636
4.5	Effect of movement in exchange rates on cash held	-	-
4.6	Cash and cash equivalents at end of period	993	993

5.	Reconciliation of cash and cash equivalents at the end of the quarter (as shown in the consolidated statement of cash flows) to the related items in the accounts	Current quarter \$A'000	Previous quarter \$A'000
5.1	Bank balances	3	3
5.2	Call deposits	990	1,293
5.3	Bank overdrafts	-	-
5.4	Other (provide details)	-	-
5.5	Cash and cash equivalents at end of quarter (should equal item 4.6 above)	993	1,296

6.	Payments to related parties of the entity and their associates	Current quarter \$A'000
6.1	Aggregate amount of payments to related parties and their associates included in item 1	19
6.2	Aggregate amount of payments to related parties and their associates included in item 2	25
<i>Note: if any amounts are shown in items 6.1 or 6.2, your quarterly activity report must include a description of, and an explanation for, such payments.</i>		

Mining exploration entity or oil and gas exploration entity quarterly cash flow report

7. Financing facilities	Total facility amount at quarter end \$A'000	Amount drawn at quarter end \$A'000
<i>Note: the term "facility" includes all forms of financing arrangements available to the entity. Add notes as necessary for an understanding of the sources of finance available to the entity.</i>		
7.1 Loan facilities	-	-
7.2 Credit standby arrangements	-	-
7.3 Other (please specify)	-	-
7.4 Total financing facilities	-	-
7.5 Unused financing facilities available at quarter end		-
7.6 Include in the box below a description of each facility above, including the lender, interest rate, maturity date and whether it is secured or unsecured. If any additional financing facilities have been entered into or are proposed to be entered into after quarter end, include a note providing details of those facilities as well.		

8. Estimated cash available for future operating activities	\$A'000
8.1 Net cash from / (used in) operating activities (item 1.9)	(59)
8.2 (Payments for exploration & evaluation classified as investing activities) (item 2.1(d))	(244)
8.3 Total relevant outgoings (item 8.1 + item 8.2)	(303)
8.4 Cash and cash equivalents at quarter end (item 4.6)	993
8.5 Unused finance facilities available at quarter end (item 7.5)	-
8.6 Total available funding (item 8.4 + item 8.5)	993
8.7 Estimated quarters of funding available (item 8.6 divided by item 8.3)	3.27
<i>Note: if the entity has reported positive relevant outgoings (ie a net cash inflow) in item 8.3, answer item 8.7 as "N/A". Otherwise, a figure for the estimated quarters of funding available must be included in item 8.7.</i>	
8.8 If item 8.7 is less than 2 quarters, please provide answers to the following questions:	
8.8.1 Does the entity expect that it will continue to have the current level of net operating cash flows for the time being and, if not, why not?	
Answer: N/A	
8.8.2 Has the entity taken any steps, or does it propose to take any steps, to raise further cash to fund its operations and, if so, what are those steps and how likely does it believe that they will be successful?	
Answer: N/A	

Mining exploration entity or oil and gas exploration entity quarterly cash flow report

8.8.3 Does the entity expect to be able to continue its operations and to meet its business objectives and, if so, on what basis?

Answer: N/A

Note: where item 8.7 is less than 2 quarters, all of questions 8.8.1, 8.8.2 and 8.8.3 above must be answered.

Compliance statement

- 1 This statement has been prepared in accordance with accounting standards and policies which comply with Listing Rule 19.11A.
- 2 This statement gives a true and fair view of the matters disclosed.

27 April 2022

Date:

The Board of GME Resources Limited

Authorised by:
(Name of body or officer authorising release – see note 4)

Notes

1. This quarterly cash flow report and the accompanying activity report provide a basis for informing the market about the entity's activities for the past quarter, how they have been financed and the effect this has had on its cash position. An entity that wishes to disclose additional information over and above the minimum required under the Listing Rules is encouraged to do so.
2. If this quarterly cash flow report has been prepared in accordance with Australian Accounting Standards, the definitions in, and provisions of, *AASB 6: Exploration for and Evaluation of Mineral Resources* and *AASB 107: Statement of Cash Flows* apply to this report. If this quarterly cash flow report has been prepared in accordance with other accounting standards agreed by ASX pursuant to Listing Rule 19.11A, the corresponding equivalent standards apply to this report.
3. Dividends received may be classified either as cash flows from operating activities or cash flows from investing activities, depending on the accounting policy of the entity.
4. If this report has been authorised for release to the market by your board of directors, you can insert here: "By the board". If it has been authorised for release to the market by a committee of your board of directors, you can insert here: "By the [name of board committee – eg Audit and Risk Committee]". If it has been authorised for release to the market by a disclosure committee, you can insert here: "By the Disclosure Committee".
5. If this report has been authorised for release to the market by your board of directors and you wish to hold yourself out as complying with recommendation 4.2 of the ASX Corporate Governance Council's *Corporate Governance Principles and Recommendations*, the board should have received a declaration from its CEO and CFO that, in their opinion, the financial records of the entity have been properly maintained, that this report complies with the appropriate accounting standards and gives a true and fair view of the cash flows of the entity, and that their opinion has been formed on the basis of a sound system of risk management and internal control which is operating effectively.